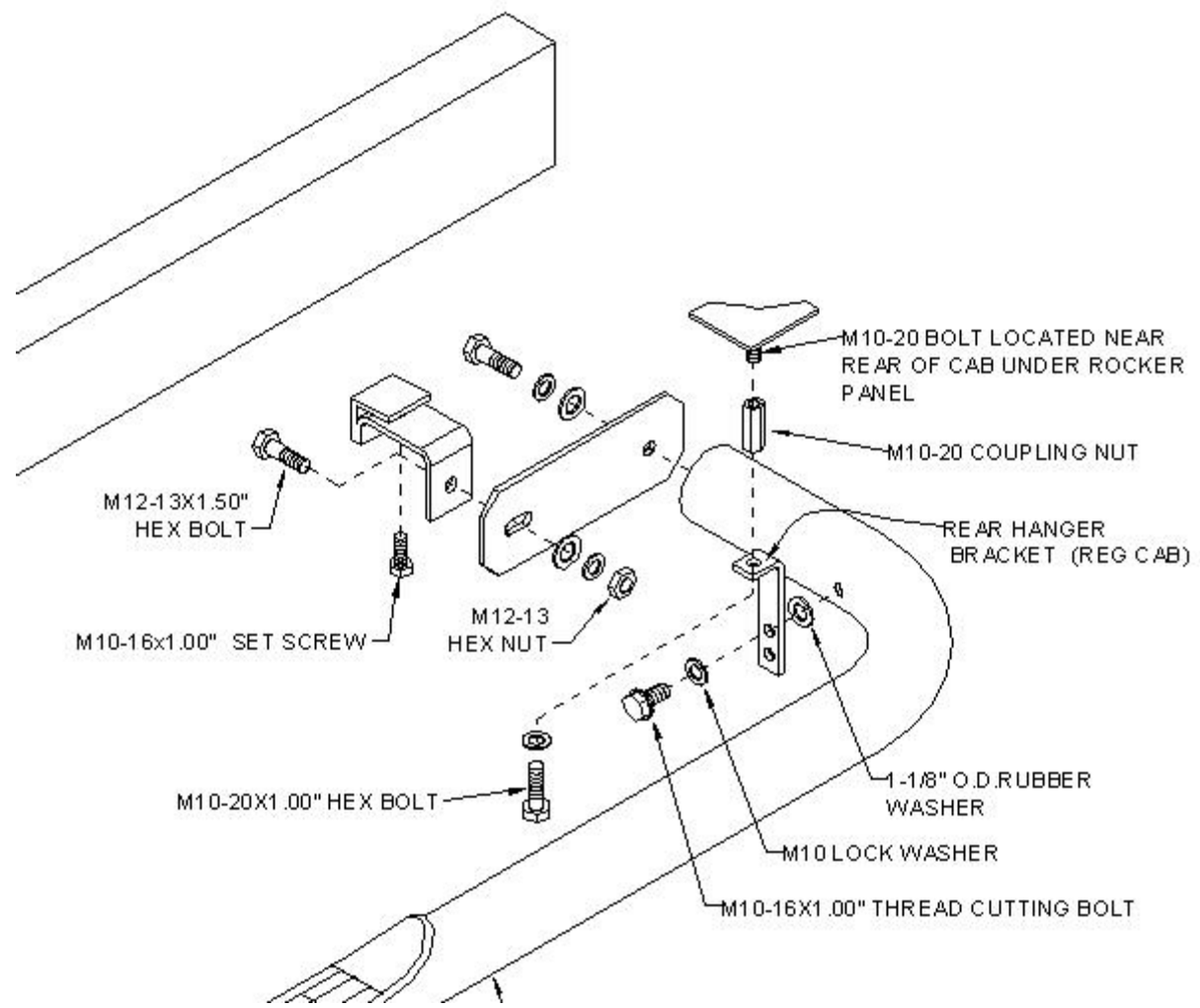


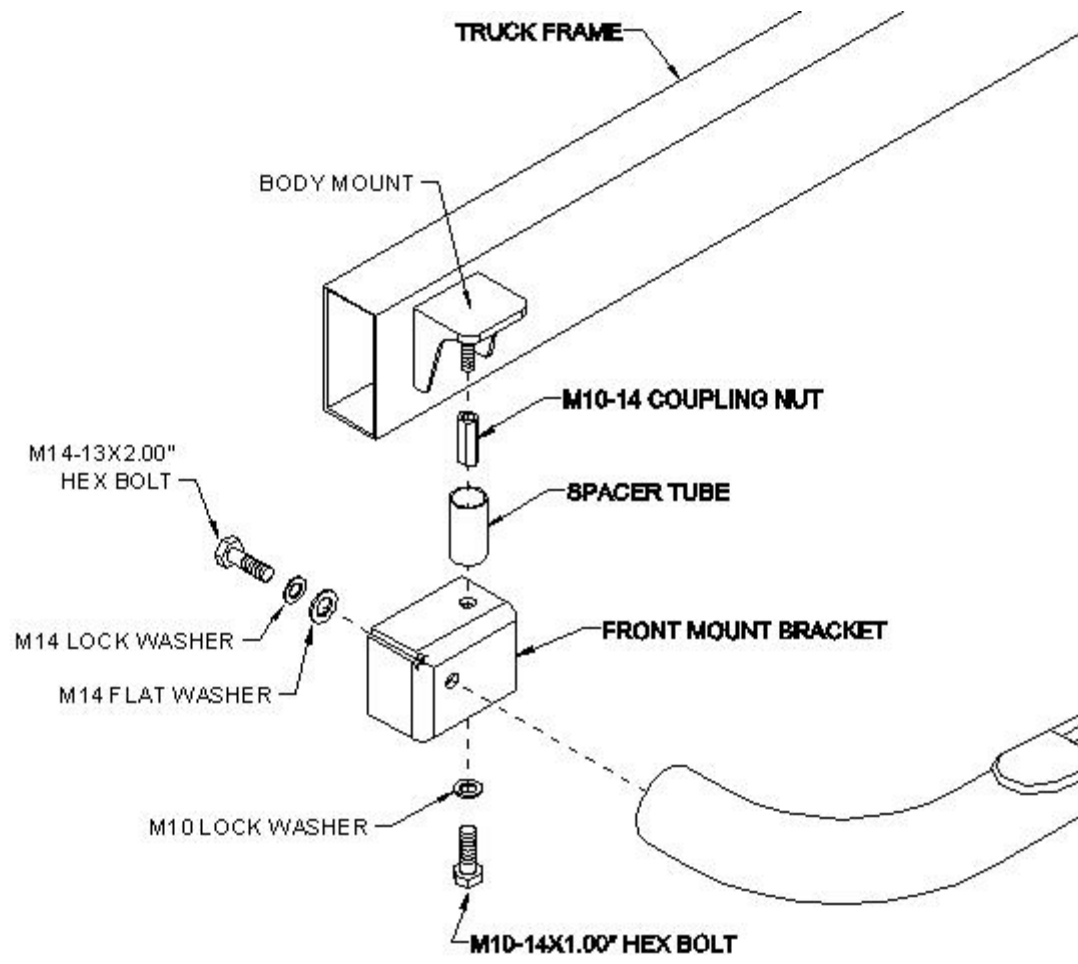
Installation Instruction

Model: 0103-0240

- STEP 1. Remove all contents from the received box and check stainless steel tube for any dent. Also verify all brackets and bolts against the parts list.
- STEP 2. Read installation manual and installation drawing completely. Understand all brackets and bolts before installation.
- STEP 3. Fasten M10-14 coupling nut on to front body mount and torque to 40 ft.lbs. Install front mount bracket to body mount. Do not tighten. Bolt the short end of step bar to front mount bracket with M14 hex head bolt as shown.
- STEP 4. Fasten rear mount bracket onto bottom flange of vehicle frame and bolt swing bracket to rear mount bracket with M12 hex bolt. Fasten rear leg of bar to swing bracket with M14 hex head bolt. Adjust bar and brackets until the rear leg of bar is level with front end of bar. Tighten swing bracket to rear mount bracket and tighten rear mount bracket to frame with M10 set screw as shown. Torque set screw to 60 in. lbs. Torque M12 and M14 bolt to 65 ft.lbs.
- STEP 5. Fasten M10-20 coupling nut onto above the hole in bar near rear of cab under rocker panel and torque 40 ft.lbs. Use M10-20 hex bolt to fasten rear hanger to coupling nut to line up with the hole in bar. Use M10 thread cutting bolt to fasten rear hanger to bar using one of the two holes in rear hanger and placing a M10 rubber washer between the rear hanger and bar tube. Torque M10 thread cutting bolt to 20 ft.lbs.

0103-0240			
Item No.	Part Number	Part Description	QTY
1	0103-0240-01	STEP BAR - DRIVER, SIDE	1
2	0103-0240-02	STEP BAR - PASSENGER SIDE	1
3	0103-0240-03	MOUNT BRACKET-FRONT-DRIVER SIDE	1
4	0103-0240-04	MOUNT BRACKET-FRONT-PASSENGER SIDE	1
5	0103-0240-05	MOUNT BRACKETS-REAR	2
6	0103-0240-06	SWING BRACKETS-REAR	2
	0103-0240-07	HANGER- REAR	2
7	0103-0240-11	SPACE TUBE	2
8	0103-0240-12	M10-14 COUPLING NUTS	2
9	0103-0240-13	M10-20 COUPLING NUTS	2
10	0103-0240-14	M10-14 HEX HEAD BOLT	2
11	0103-0240-15	M10-20 HEX HEAD BOLT	2
12	0103-0240-16	M10 THREAD CUTTING BOLT	2
13	0103-0240-17	M12 HEX HEAD BOLT	2
14	0103-0240-18	M12 HEX NUT	2
15	0103-0240-19	M10 SPLIT LOCK WASHER	8
16	0103-0240-20	M10 FLAT WASHER	10
17	0103-0240-21	M10 SQUARE HEAD SET SCREW	2
18	0103-0240-22	M10 RUBBER WASHER	2
19	0103-0240-23	M14 HEX HEAD BOLT	4
20	0103-0240-24	M14 SPLIT LOCK WASHER	4
21	0103-0240-25	M14 FLAT WASHER	4
TOOLS REQUIRED			
11/16" SOCKET/WRENCH			
19MM SOCKET / WRENCH			
3/4" SOCKET / WRENCH			
RATCHET			
TORQUE WRENCH			
#1 PHILLIPS SCREWDRIVER			





0103-0240

ASSEMBLY AND INSTALLATION VIEW OF DRIVER
SIDE-PASSENGER SIDE OPPOSITE

